

APM100

ACCESS POINT CONTROLLER



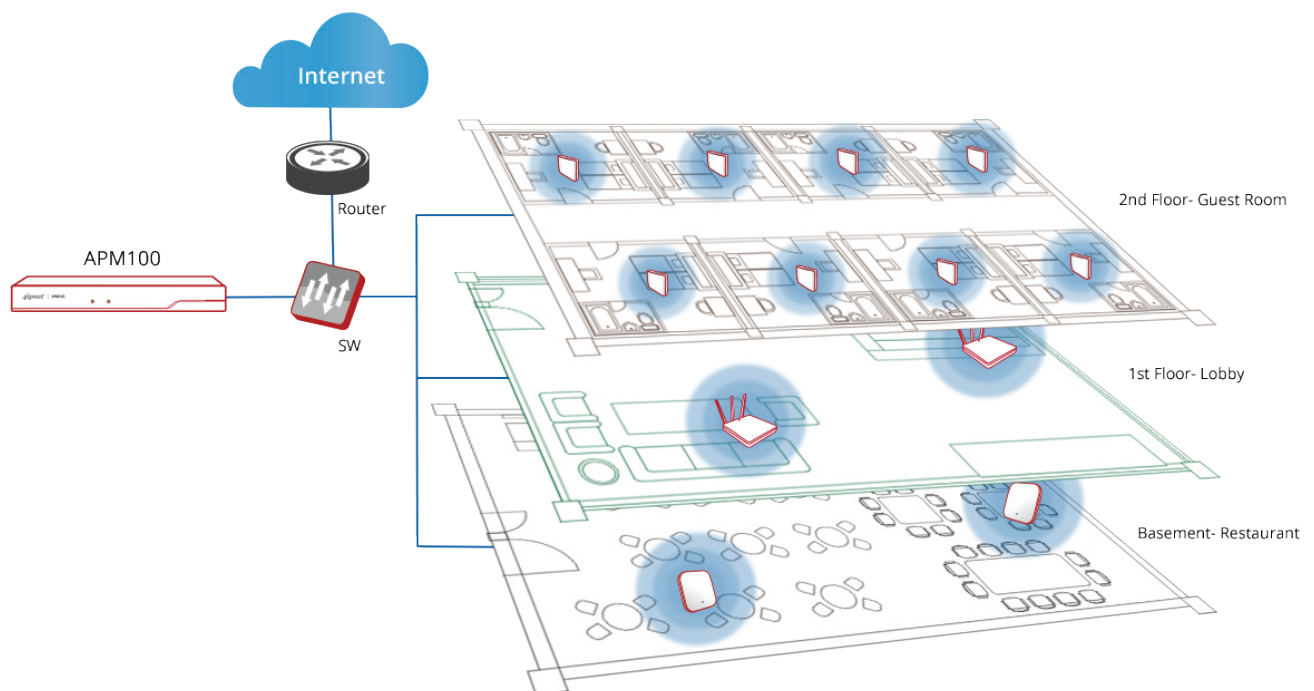
INTRODUCTION

The 4ipnet APM100 is a simple yet effective centralized Wi-Fi AP management solution, designed specifically for small businesses, hospitality venues, and distributed retail/chain stores. With a straightforward user interface and plug-and-play setup, network administrators can quickly deploy and manage a Wi-Fi network of up to 100 APs*¹ with minimal IT resources.

Setting up a Wi-Fi network with APM100 is extremely easy - just configure a provisioning template and plug the APs and APM100 into the same switch/subnet - in a matter of minutes the network will be up and running. In addition to facilitating wireless network setup, the APM100 also provides extensive monitoring and management features, such as detailed logs and reports, automated status change notifications, and integrated troubleshooting utilities.

With the APM100, organizations have a cost-effective, entry-level network management solution for basic Wi-Fi deployments. For businesses needing advanced user authentication, role-based QoS/firewall policies, and traffic shaping capabilities, the APM100 can be further combined with 4ipnet WHG-series gateways to support a wide-array of application scenarios.

*1: AP models supported are listed in the specifications table



WI-FI AP CONTROLLER

- Plug-and-Play Installation

Automatic discovery and provisioning eliminates many repetitive and cumbersome tasks during initial network deployments. Unlike software-based Wi-Fi controllers that require additional installation onto a separate PC or hardware, the APM system is ready out of the box, has dedicated processing power, and can be accessed using any PC or mobile device.

- WLAN AP Groups

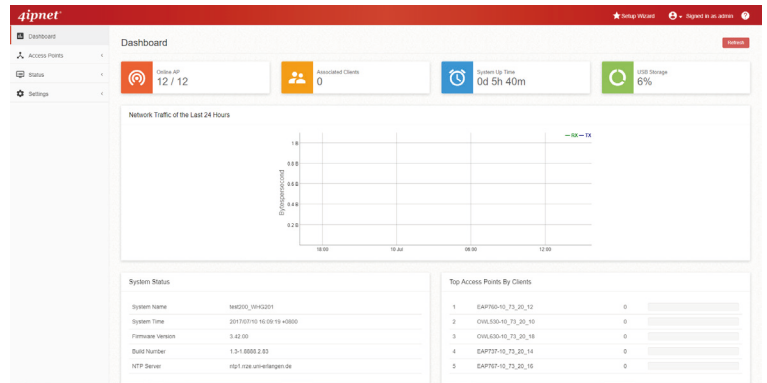
AP grouping with tiered administrator privileges allows flexible management of various subsets of APs. Each group has its own map-based view, unified management interface, and usage information collection.

- Flexible L2/L3 AP Management

The APM system comes with native AP management supporting both layer 2 and layer 3 deployment scenarios. Tunnel interfaces between the APM and remote APs can be encrypted to enhance network security.

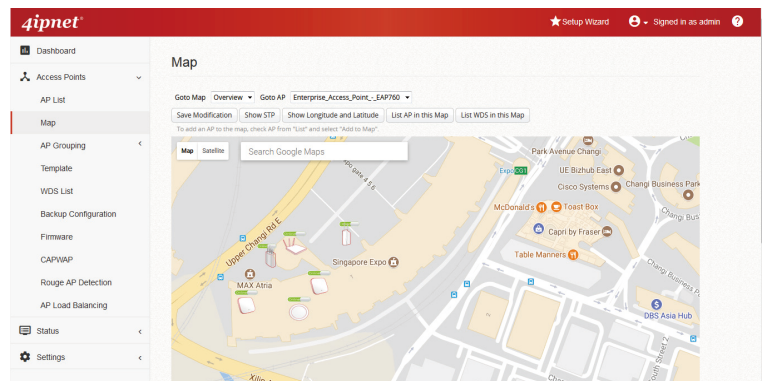
- Built-in Troubleshooting Utilities

Integrated network troubleshooting utilities such as ping, traceroute, and packet capture allow administrators to quickly identify and respond to network issues.



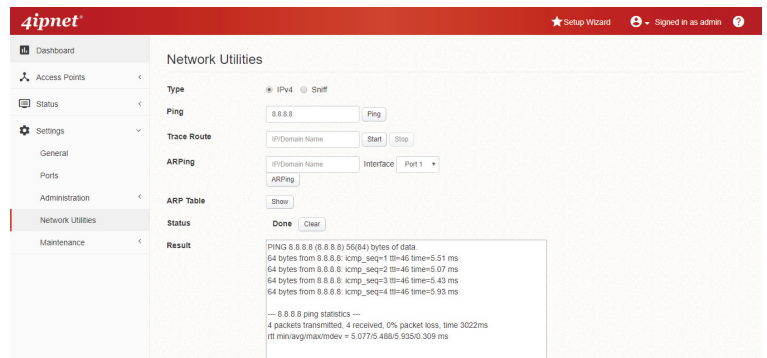
Dashboard

The APM system provides an intuitive and easy-to-digest network dashboard



Map-based Visualization

Easily monitor the status of APs placed in various geographical locations with the APM's map feature

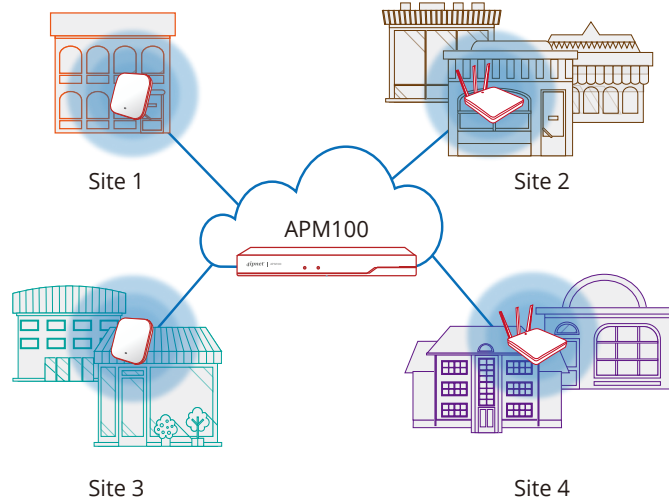


Built-in Troubleshooting Utilities

Integrated network troubleshooting utilities allow administrators to quickly identify and respond to network issues

MULTIPLE-SITE MANAGEMENT & REPORTING

A single APM system can manage APs at multiple distributed sites. Reporting and analytics displays can be easily customized by administrators to enable intuitive monitoring of system activity.



EAP705
Dual radio, 2x2:2, 802.11ac



EAP737
Dual radio, 2x2:2, 802.11ac Wave 2



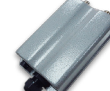
EAP760
Dual radio, 3x3:3, 802.11ac



EAP767
Dual radio, 3x3:3, 802.11ac



OWL530
Single radio, 2x2:2, 802.11a/b/g/n



OWL630
Dual radio, 3x3:3, 802.11ac



SPECIFICATIONS

APM100 CAPACITY

| | |
|-----------------------|--------------------------------------------------|
| Number of Managed APs | • Up to 100 |
| Supported AP Models | • EAP705, EAP737, EAP760, EAP767, OWL530, OWL630 |

HARDWARE SPECIFICATION

| | |
|-----------------------|---------------------------------------------------|
| Form Factor | • Desktop |
| Dimensions | • 19.0 cm x 13.3 cm x 3.3 cm |
| Weight | • 0.82 kg (1.81 lbs) |
| Power | • DC Input: 12V / 1A (Power adapter included) |
| Network Interface | • 5 x 10/100/1000Base-T Ethernet, AutoMDIX, RJ-45 |
| USB | • USB 3.0 (16GB disk included) |
| Buttons | • Power, Reset/Restart |
| LED | • Power, Status |
| Certifications | • CE, FCC |
| Operating Temperature | • 0 to 40°C (32 to 104°F) |
| Operating Humidity | • 5% to 95% Non-condensing |